



# Cruise Manual 2019







All in one fjord



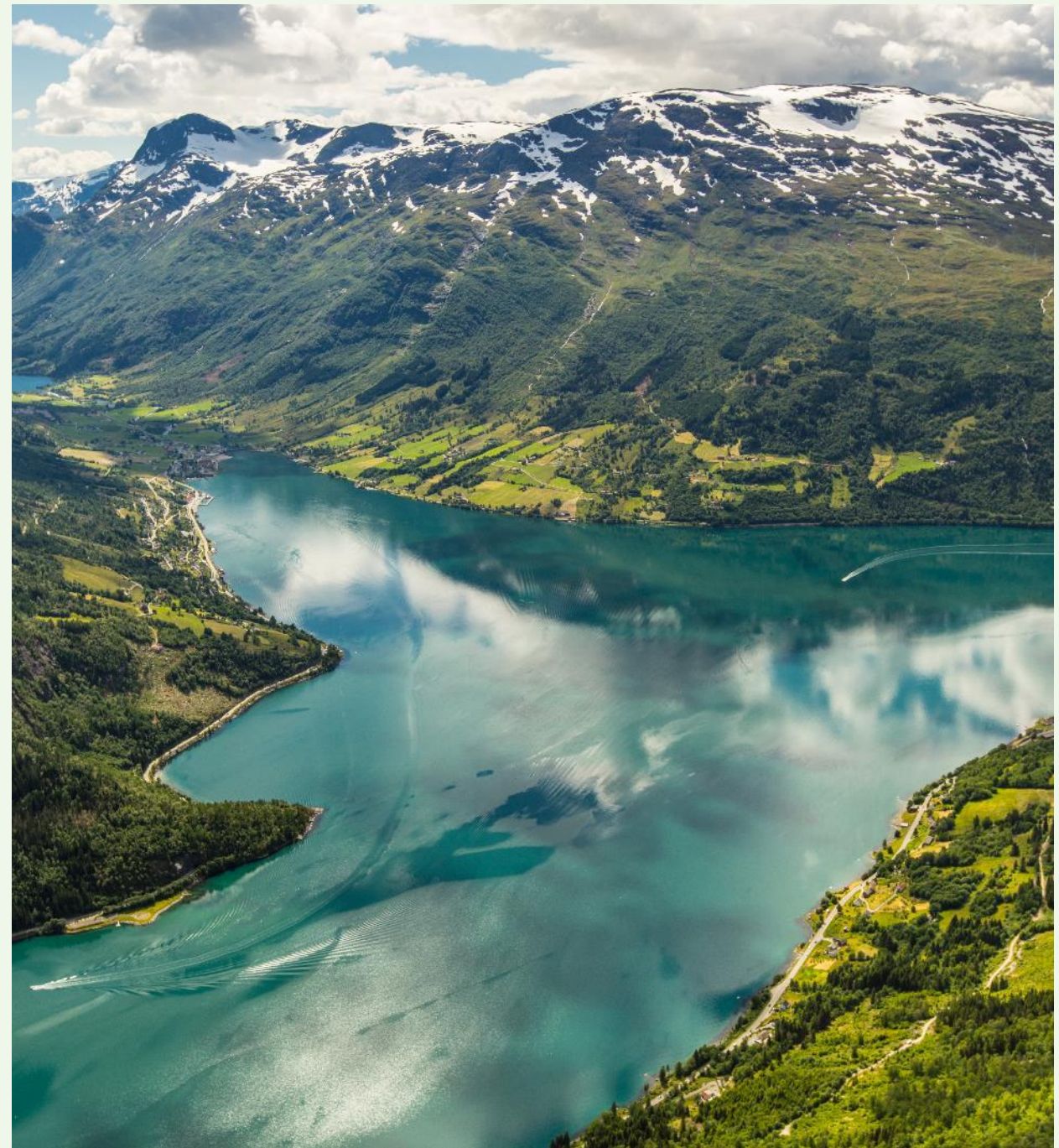
# Port of Nordfjordeid – The Viking destination

Cruise Manual 2019

N  
O  
R  
D  
F  
J  
O  
R  
D  
E  
I  
D

# Content

1. Welcome to Nordfjordeid
2. Map of Nordfjord
3. Contact information
4. Port information
5. Excursions (scenic, cultural and active)
6. Local tour agents
7. Map of Nordfjordeid





# Port of Nordfjordeid



Nordfjord is situated between the biggest glacier in mainland Europe and Norway's wildest stretch of coast at Stad. This 150-km-long area from west to east, from ocean to glacier, offers lots of great and readily accessible scenic, cultural and culinary experiences. Everything you're looking for in one fjord.

We wish you a warm welcome to the Nordfjord. Nordfjord consists of the following ports: Nordfjordeid, Olden-Loen, Måløy, Selje, Sandane.

We hope this information will be useful when calling in at Nordfjordeid.

The seawalk Port of Nordfjordeid is new in 2019. Nordfjordeid is in the heart of Nordfjord. From the seawalk pier you find a complete small modern Norwegian town with post, bank, doctor, hospital, dentist, shopping, operahouse, Norway's largest vikingship, the Fjord Horse, art exhibition, church-concert, golfing, salmonspotting and hiking.

[nordfjord.no/cruise](https://nordfjord.no/cruise)







West Cape



Hoddevik & surf



Selja Monastery



The Myklebust Viking Ship & Sagastad



The Fjord horse



Nordfjord Folk Museum



Lake Hornindalsvatnet



Loen Skylift & Via Ferrata Loen



Mt. Skåla 1848 m



Lodalen Valley

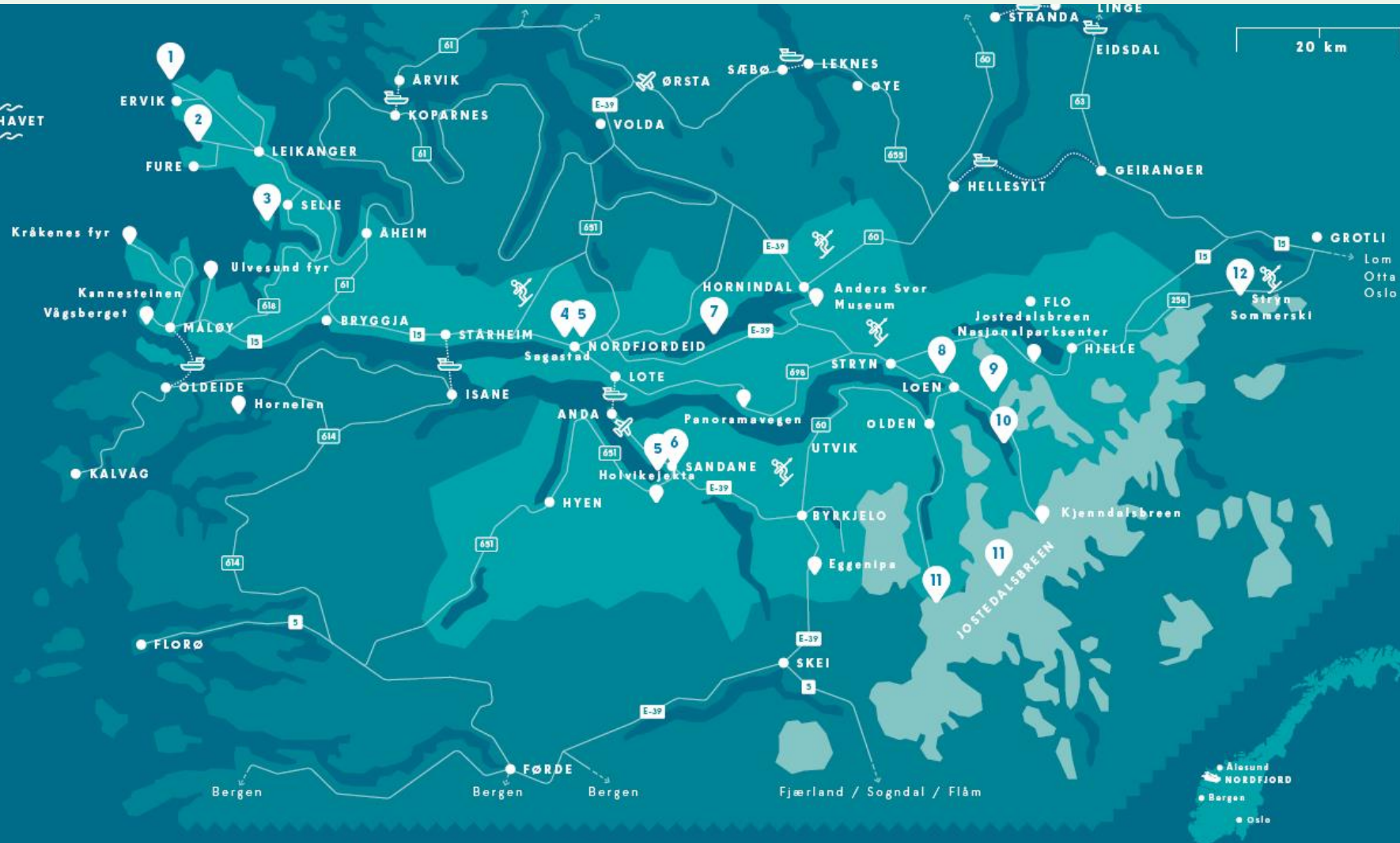


Briksdal Glacier & Jostedal National Park



The old Strynefjell Mountain Road

STADHAVET





# Contact Information

Port of Nordfjordeid, tel. +47 917 95 300

Port Agent Nordfjordeid/Nordfjord Service Terminal,  
tel. +47 917 95 300

Harbor Master/Seawalk Nordfjordeid tel. +47 917 95 300

Firda Billag Buss AS, tel. +47 57 72 50 00

Geiranger & Nordfjord Cruise Handling, tel. +47 57 87 74 73

Visit Nordfjord, tel. +47 57 87 40 40

Eid Tourist Information, tel. +47 57 86 46 00

[www.portofnordfjordeid.no](http://www.portofnordfjordeid.no)

[eid@nordfjordcruises.no](mailto:eid@nordfjordcruises.no)

[eid@nordfjordcruises.no](mailto:eid@nordfjordcruises.no)

[firda-billag.no](http://firda-billag.no)

[geiranger-nordfjord.no](http://geiranger-nordfjord.no)

[nordfjord.no](http://nordfjord.no)

[nordfjord.no](http://nordfjord.no)

**Fire 110**

**Police 112**

**Ambulance 113**

**Doctor Nordfjordeid +47 57 86 30 20**

**Medical Emergencies +47 57 86 43 80  
/116117 or 113**

**Nordfjord Hospital +47 57 86 40 00**

**Pharmacy Nordfjordeid +47 57 86 00 77**

**Police Eid +47 57 86 34 80 / 02800**

**Security: Report ISPS security incident:  
+47 917 95 300/+47 355 72 625**



# Port Authority/ Port of Nordfjordeid

## Port Authority/Bremanger Havn

Tel. +47 994 39 290

E-mail: [monica.sande@bremanger.kommune.no](mailto:monica.sande@bremanger.kommune.no)

**Security:** ISPS – Code implemented for Port and Port facility. Nordfjordeid Cruisehavn/NONFD-0001

**Local time:** UTC +1, summer time UTC +2.

**Local Pilot Station:** Kvitsøy Pilot station +47 517 35 397

## ISPS requirements

Pre-arrival information: Available in Safe Sea Net. Please send by e-mail to: [eid@nordfjordcruises.no](mailto:eid@nordfjordcruises.no) if not in SSN;

## ISPS documents:

1. Ship Pre Arrival information
2. Pax list
3. Crew list
4. Embarking/Disembarking manifest
5. Visitor list
6. Cargo manifest (loading/unloading)

## Berths: The SeaWalk

The SeaWalk is approx. 220 m long and 4,2- m wide steel, ADA compliant construction, floating on 8 wave damping pontoons with a capacity of more than 4000 passengers per hour and can carry a passenger load of more than 300 tons. SeaWalk consists of 3 bridges, two link pontoons and the hinged landing section. The bridges are 72 meters long. The walkway is approx. 210 cm above sea level and the railings are 110 cm high.

**Tugs:** Not compulsory.

**Harbour Pilot:** Not compulsory.

**Mooring boat:** Available.



# « Cruise Day » Nordfjordeid



When the cruise ship arrive in Nordfjordeid, this charming town will welcome you with all it's heart for you to enjoy your Cruise Day here. An early afternoon festival with good shopping deals, art exhibition, concerts, salmon spotting, golfing, hiking and a church concert will be available.

In Nordfjordeid you will find 50 shops and 10 restaurants. Perhaps the most special souvenir to bring home from your cruise is to be found here?

The Church in Eid dates back to 1849, and is well known for its good acoustics and spectacular carvings and rose painting. On Cruise days, visitors are invited to attend a church concert at 4pm performed by local musicians.

Our marked viking walk will take you safely from the seawalk pier through the old street, the burial mound, the church of Eid, the Saga Trail to the Sagastad Centre.



# Scenic excursions





# West Cape

Half-day tour to the famous West Cape. From Nordfjordeid we drive west to the historic coastal village of Selje, enjoying typical coastal scenery on the way. During the short break in Selje we can have a walk on the sandy Selje Beach. Over the Stad peninsula, famous in Norway for extremely rough storms we reach West Cape, towering some 500 metres above the Atlantic.

## ITINERARY

Time from departure

0	Dep. Nordfjordeid
1 h	Arr. Selje
1 h 30 min.	Dep. Selje
2 h 15 min.	Arr. Vestkapp
3 h	Dep. Vestkapp via Bryggja
4 h 30 min.	Arr. Nordfjordeid





# Nordfjord Panorama

**This excursion rewards you with superb views of the Nordfjord, the fifth longest fjord in Norway and Hornindal Lake, the deepest lake in Northern Europe.**

## ITINERARY

Time from departure

0	Dep. Nordfjordeid
30 min.	Arr. Kvalen
45 min.	Dep. Kvalen
1h	Arr. Nos viewpoint
1h 15 min.	Dep. Nos
2 h	Arr. Stryn stop for refreshments/shopping
3 h	Dep. Stryn
	Return via Hornindal Lake
4 h 30 min.	Arr. Nordfjordeid

This tour can be done in several shifts.





# Fishing village of Kalvåg

Enjoy a day tour along the banks of Nordfjord to the charming fishing village of Kalvåg, with good atmosphere, good sea food and coastal culture.

## ITINERARY

Time from departure

0h	Dep. Nordfjordeid
1h	Ferry Måløy – Oldeide
2h 15 min	Arr. Kalvåg
	Lunch
4h 30 min.	Dep. Kalvåg
6h	Ferry Isane-Stårheim
6h 30 min.	Arr. Nordfjordeid

Maximum number of pax: 120

Double capacity if the tour is operated in two groups (vice versa).





# Briksdal Glacier

The magnificent Briksdal Glacier forms part of the Jostedal Glacier National Park, and plunges 1200 metres to the lush, narrow Briksdal valley below – a sight that attracts 300,000 visitors from all over the world each year.

## ITINERARY

Timing from departure

0	Dep. Nordfjordeid
30 min.	Arr. Nos viewpoint
45 min.	Dep. Nos
1 h 45 min.	Olden Lake (photo stop)
2 h	Briksdal
	Easy walk to the glacier (3 km, 30-45 min. each way)
	Coffee/tea, cakes and souvenir shopping.
4 h 30 min.	Dep. Briksdal
	Return via Lake Hornindal
6 h 15 min.	Arr. Nordfjordeid

Maximum pax: 650





# Troll car to Briksdal Glacier

The magnificent Briksdal Glacier forms part of the Jostedal Glacier National Park, and plunges 1200 metres to the lush, narrow Briksdal valley below – a sight that attracts 300,000 visitors from all over the world each year.

## ITINERARY

Time from departure

0	Dep. Nordfjordeid
30 min.	Arr. Nos viewpoint
45 min.	Dep. Nos
1 h 45 min.	Olden Lake (photo stop)
2 h	Arr. Briksdal
2 h	Dep. Troll Car
2 h 15 min	Arr. Briksdal Glacier
	Easy walk to the glacier, approx. 800 metres on gravel footpath.
3 h	Dep. with Troll car
3 h 15 min	Arr. Briksdal
	Restaurant. Coffee/tea, cakes and souvenir shopping.
4 h	Dep. Briksdal
	Return via Lake Hornindal
5 h 45 min.	Arr. Nordfjordeid

Maximum pax: 84 in each group.





# Idyllic Yrineset

Yrineset, popularly known as the Rivendell gem of Lake Olden. Treat body and soul to a few hours of peace and tranquillity at this idyllic spot; maybe even catch your own meal from the lake.

## ITINERARY

Time from departure

0	Dep. Nordfjordeid
30 min.	Arr. Nos viewpoint
45 min.	Dep. Nos
2 h	Arr. Yrineset Fishing activities Fish barbecue
4 h 30 min.	Dep. Yrineset Via Lake Hornindal
6 h.	Arr. Nordfjordeid

Maximum number of pax: 90

The tour can be operated in several shifts.





# Combination of excursions in Olden Valley

Troll car to  
Briksdal Glacier



Aabrek Farm



Stone Age Cave



Yrineset





# Loen Skylift

**Loen Skylift - a spectacular new attraction and adventure arena. Loen Skylift will lift you from the fjord to 1011 m. Enjoy the spectacular views of the fjord landscape from the restaurant table, or while hiking in the mountains.**

## ITINERARY

Timing from departure

0	Dep. Nordfjordeid
30 min.	Arr. Nos viewpoint
45 min.	Dep. Nos
1 h 45 min.	Arr. Loen
2 h	Loen Skylift
3 h	Dep. Loen
	Return via Lake Hornindal
4 h	Arr. Nordfjordeid

This excursion can be done in several shifts.  
Possibilities to add different hikes at Mt. Hoven, and lunch or refreshments at Hoven Restaurant.





# Lodal Valley & Kjenndal Glacier

A boat trip on the emerald green waters of Loen Lake is a fine introduction to this valley's awe-inspiring scenery and dramatic history.

## ITINERARY

Time from departure

0	Dep. Nordfjordeid
30 min.	Arr. Nos viewpoint
45 min.	Dep. Nos
1 h 45 min.	Dep. MS Kjenndal II
2 h 45 min.	Coffee/tea at Kjenndalstova
3h 30 min.	Dep. Kjenndalstova
3h 45 min.	Arr. Kjenndal Glacier
4h	Dep. Kjenndal Glacier
	Stop at the memorial ground
	Return via Lake Hornindal
6h 15 min.	Arrive Nordfjordeid

Maximum pax: 90





# Combination tours from Loen

## Kjenndal Glacier & Loen Skylift

Trip to Lodalen Valley and the Kjenndal Glacier in combination with Loen Skylift to Mt. Hoven 1011 m.a.s.l.

### ITINERARY

Time from departure

0	Dep. Nordfjordeid
30 min.	Arr. Nos viewpoint
45 min.	Dep. Nos
1 h 45 min.	Dep. MS Kjenndal II
3h	Arr. Kjenndal Glacier
3h 30 min.	Dep. Kjenndal Glacier
	Stop at the memorial ground
4h	Arr. Loen
	Loen Skylift
	Refreshments at Hoven Restaurant
5h 15 min.	Dep. Loen
	Return via Lake Hornindal
6h 30 min.	Arrive Nordfjordeid





# Helicopter scenic flights

See the most awe-inspiring area in Norway from the air with modern, comfortable helicopters. Discover Nordfjord from a bird's eye view.

## ITINERARY

Time from departure

0	Dep. Nordfjordeid bus
35 min.	Arr. landing site helicopter
55 min.	Arr. landing site bus
1 h 30 min.	Arr. Nordfjordeid

Maximum number of pax: 55  
Larger groups can be catered for on demand in a relay arrangement.





# Geiranger

From one wonderful fjord to another, experience the beauty and splendour of a part of Norway you do not want to miss.

## ITINERARY

Time from departure

0	Dep. Nordfjordeid
2 h	Arr. Geiranger Skywalk, Mt. Dalsnibba
2 h 15 min.	Dep. Geiranger Skywalk, Mt. Dalsnibba
3 h 15 min.	Arr. Geiranger (lunch)
5 h	Dep. Geiranger - ferry
6 h	Arr. Hellesylt
	Return via Lake Hornindal
7 h 15 min.	Arr. Nordfjordeid

Maximum number of pax: 180

Double capacity if the tour is operated in two groups (vice versa).





# Cultural excursions





# Sagastad and the Myklebust Viking Ship

Norway's largest Viking Ship, that has ever been found, is being reconstructed, based on the findings in the burial mound. The ship will be exhibited in Sagastad Visitor Centre, in Nordfjordeid, where the ship was found. Digital and physical exhibitions about the Vikings, the findings and boat building traditions. Changing exhibitions.

Located only 700 meters from Port of Nordfjordeid – a nice stroll along the fjord.

## ITINERARY

Time from departure

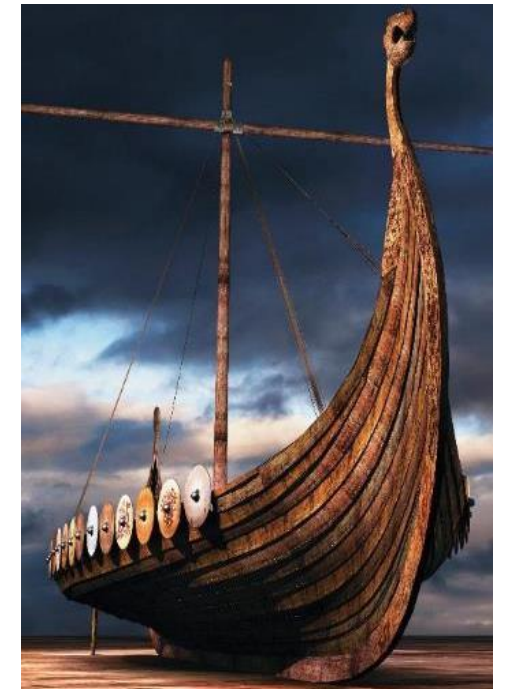
0	Dep. Nordfjordeid
10 min.	Arr. Sagastad Viking Centre

A visit to the centre takes from 30 minutes to 1,5 hours, depending on your interest and how deep you want to dive into the Viking History.

**Time spent:** 1 hr – 2,5 hrs including the walk.

**Distance from port:** 700 meters.

Souvenir Shop and Cafe at Sagastad





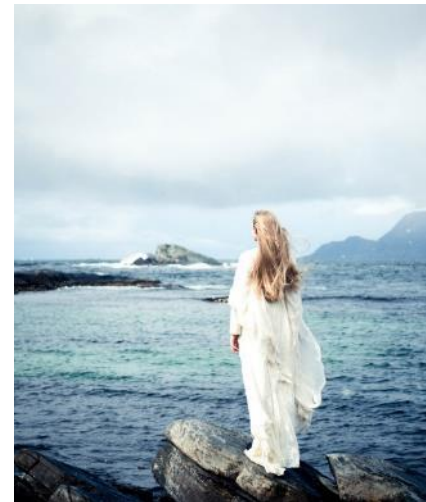
# Selja Monastery

We drive through a contrasting landscape of mountain and ocean to the picturesque village Selje. From here, there is a 15 minutes boat ride to Selja Island, hosting the ruins of Selja Monastery, built by the Benedictine monks in the early 12<sup>th</sup> century in memory of Sta. Sunniva. The Legend says that the Irish king's daughter Sunniva died as a martyr here, and became the saint of Western Norway.

## ITINERARY

Time from departure

0	Dep. Nordfjordeid
1 h	Arr. Selje
1 h 15 min.	Arr Selja Monastery at Selja Island
2 h 15 min.	Dep. Selja
2 h 30 min.	Arr. Selje
	Stop for coffee and a stroll in the village
3 h	Dep. Selje Via Åheim and Bryggja
4 h 30 min.	Arr. Nordfjordeid





# From the Viking Age to Modern Times

## 1000 years of Nordfjord history in one day

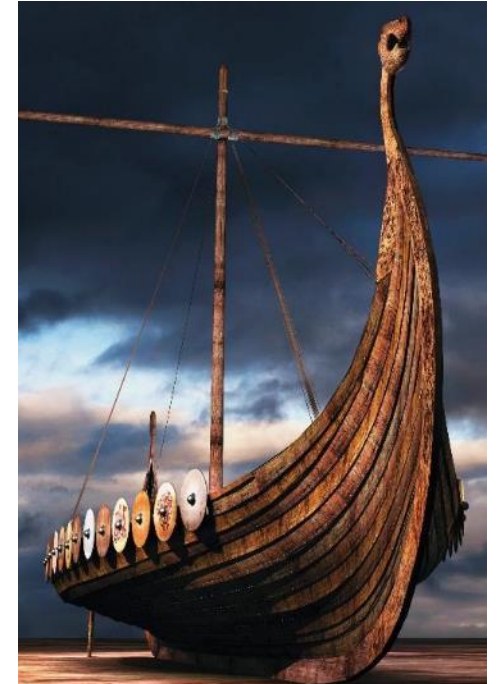
A magic round trip with a good dose of scenery, culture, and history. Experience Norway's largest Viking Ship, exceptional Norwegian fjord scenery, snow capped mountains and Nordfjord Folk Museum. And enjoy local gourmet lunch at Gloppen Hotel.

### ITINERARY

Time from departure

0	Dep. Port of Nordfjordeid
10 min.	Arr. Sagastad Visit Sagastad & the Myklebust Viking Ship
1h	Dep. Sagastad
1h 15 min.	Ferry Lote-Anda
1h 45 min.	Arr. Sandane and Nordfjord Folk Museum
2h 30 min.	Lunch with local food at Gloppen Hotel
3h 45 min.	Dep. Sandane
5h 15 min.	Arr. Stryn
5h 30 min.	Dep. Stryn
6h 15 min.	Arr. Nos. Photo stop.
6h 30 min.	Dep. Nos
7h	Arr. Port of Nordfjordeid

Maximum pax: 90 pax.





# Culture & Cuisine of Nordfjord

A magic round trip with a liberal dose of scenery, culture, and traditional, local fare.

## ITINERARY

Time from departure

0	Dep. Nordfjordeid
	Arr. Lote – ferry Anda
30 min.	Visit at Vereide Church
1h 15 min.	Arr. Sandane
	Visit Nordfjord Folk Museum
2h 15 min.	Dep. Museum
2h 30 min.	Lunch with local food at Gloppen Hotel
4h	Dep. Gloppen Hotel
4h	Visit Holvikejekta (ancient sea vessel)
5h	Dep. Anda – ferry Lote
5h 30 min.	Arr. Nordfjordeid

Maximum pax: 90 pax.





# Viking & Culture

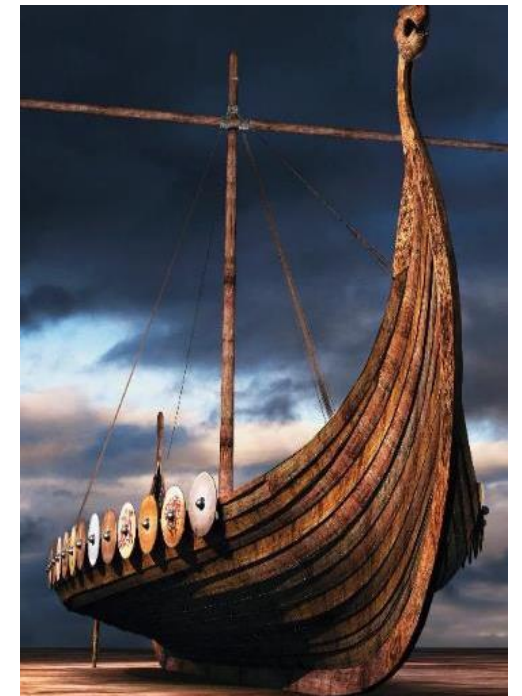
1000 years of Nordfjord history in one day

A magic round trip with a liberal dose of scenery, culture, and traditional, local fare.

## ITINERARY

Time from departure

0	Dep. Nordfjordeid
	Visit Sagastad & the Myklebust Viking Ship
1h 15 min.	Lote – ferry Anda
1h 45 min.	Arr. Sandane
	Visit Nordfjord Folk Museum
2h 45 min.	Dep. Museum
2h 45 min.	Lunch Gloppen Hotel
4h	Dep. Gloppen Hotel
4h 15 min.	Dep. Anda – ferry Lote
4h 45 min.	Arr. Nordfjordeid





# Home visit to Skårhaug

Visit one of the oldest privately owned houses in Eid. The house was built in 1840 and was both the sheriff's home and his office. Since 1870, Skårhaug has been owned by the same family. Recently, the house was renovated, and the rooms have been furnished in several different period styles.

When you visit Skårhaug, a guided tour is available. You will be able to touch old tools and other objects and learn about the local baking traditions. Perhaps you would like to make some «svele» or «potetkake» yourself? Coffee in porcelain cups is offered, and you can relax in the garden or in the beautiful living rooms.

We walk from the port through the cobblestoned Eidsgata with traditional wooden houses via the Viking burial mound and a short visit to the Eid church. This is an on-foot tour.

## ITINERARY

Time from departure

0	Dep. Port of Nordfjordeid Guided walk to the Viking burial mound (on the Saga Trail) Visit Eid Church
1h 15 min.	Home visit to Skårhaug for tour and coffee/local pastries.
2h 30 min.	Dep. Skårhaug
3h	Arr. Port of Nordfjordeid

Maximum pax: 20 pax





# Sagastad and the Saga road to Bjørkedalen

The excursion starts with the Sagastad Viking Centre. Get to know the largest vikingship known in Norway, more than 30 meters long and the modern exhibition showing the interesting story of the viking kings living at Nordfjordeid more than 1000 years ago.

Follow the narrow road in Hjelmelandsdalen in unspoiled nature to Bjørkedalen. Stop for fotoshoots at the summer farms, listen to the waterfalls and enjoy the grand views on the road towards Bjørkedalen. There will be a stop with snack at the lake of Bjørkedalen. Here you will learn more about the 1000 year long tradition of building boats and ships from the special timber in the valley. Return to Nordfjordeid by E39.

Duration 3 - 3,5 hours,  
Easy walk from the minibus

Maximum pax: 16 pax





# Museums and visitor centres

- Sagastad and the Myklebust Viking Ship
- Nordfjord Folk Museum
- Anders Svor Museum
- Singerheimen
- Jostedalsbreen National Park Centre
- Vågsberget Trading Station and Inn
- The Måløy Raid centre
- Selja Monastery





# Nave Deer Farm

Visit a red deer farm and learn more about the deer and the other animals on the farm. You can watch the deers being feed, and if you want to get in close contact with the deers it is possible to go inside the fence.

In the barbeque hut at the base camp you will be served coffee and "svele" (Norwegian pancakes) the Norwegian way, fried on open fire, with strawberry jam and sour cream. You will also be served fried taste of deer and lama roastbeef with potato salad, and fried fillets of trout with sour cream, onion and Norwegian flatbread.

## ITINERARY

Time from departure

0	Dep. Port of Nordfjordeid
35 min.	Arr. Nave Deer Farm
2h 35 min.	Dep. Nave Deer Farm
3h 10 min.	Arr. Port of Nordfjordeid

Easywalk - good shoes (400 m distance from the bus)  
Capacity: 45 pax





# War history on the coast of Nordfjord

This tour give you the highlights of the charming island of Vågsøy. We drive west to the coast of Nordfjord. Visit the international war history information and visitor centre, the Måløy Raid Centre. Then we go across the street for a light traditional fish soup at Kraftstasjonen restaurant & kolonial. A short walk and visit to Moldøen island. We then proceed to Kannesteinen, the rock with the special shape.

## ITINERARY

Time from departure

0 h	Dep. Nordfjordeid
45 min.	Arr. The Måløy Raid Centre
2 h	Dep. The Måløy Raid Centre
2 h	Arr. Kraftstasjonen Restaurant
3 h	Dep. Kraftstasjonen Restaurant
3 h 15 min.	Arr. Moldøen island
3 h 30 min.	Dep. Moldøen island
4 h	Arr. Kannesteinen
4 h 25 min.	Dep. Kannesteinen
5 h 30 min.	Arr. Nordfjordeid.

Minimum number of pax: 10

Maximum number of pax: 45





# War history on the coast of Nordfjord

This half-day tour give you the highlights of the charming island of Vågsøy. We drive west to the coast of Nordfjord. Visit the international war history information and visitor centre, the Måløy Raid Centre. Short walk to the Moldøen island. We then proceed to Kannesteinen, the rock with the special shape.

## ITINERARY

Time from departure

0 h	Dep. Nordfjordeid
45 min	Arr. The Måløy Raid Centre
1 h 45 min.	Dep. The Måløy Raid Centre
2 h	Arr. Moldøen island
2 h 15 min.	Dep. Moldøen island
2 h 45 min.	Arr. Kannesteinen
3 h	Dep. Kannesteinen
4h	Arr. Nordfjordeid.

Minimum number of pax: 10

Maximum number of pax: 45





# A historic journey at the coast of Nordfjord

This tour give you the highlights of the charming island of Vågsøy. We drive west to the coast of Nordfjord. We drive along the picturesque northern coast to Kråkenes. Walk uphill to the lighthouse to see and learn the history of the lighthouses. We proceed further to visit the international war history information and visitor centre, the Måløy Raid Centre in the middle of Måløy fishing town. After the centre we walk across the street for a light traditional fish soup at Kraftstasjonen restaurant & kolonial.

## ITINERARY

Time from departure

0 h	Dep. Nordfjordeid
45 min	Arr. Måløy
1 h 30 min.	Arr. Kråkenes lighthouse
2 h 10 min.	Dep. Kråkenes lighthouse
2 h 30 min.	Arr. The Måløy Raid Centre
3 h 30 min.	Dep. The Måløy Raid Centre
3 h 35 min.	Arr. Kraftstasjonen
4 h 35 min.	Dep. Kraftstasjonen Restaurant
5 h 20 min.	Arr. Nordfjordeid.

Minimum number of pax: 10

Maximum number of pax: 45





# A historic journey at the coast of Nordfjord

This half-day tour give you the highlights of the charming island of Vågsøy. We drive west to the coast of Nordfjord. We drive along the picturesque northern coast to Kråkenes. Walk uphill to the lighthouse follow by a guided tour of the inside of the lighthouse. We proceed further to visit the international war history information and visitor centre, the Måløy Raid Centre in the middle of Måløy fishing town.

## ITINERARY

Time from departure

0 h	Dep. Nordfjordeid
45 min	Arr. Måløy
1 h 30 min.	Arr. Kråkenes lighthouse
2 h	Dep. Kråkenes lighthouse
2 h 30 min.	Arr. The Måløy Raid Centre
3 h 30 min.	Dep. The Måløy Raid Centre
4 h 15 min.	Arr. Nordfjordeid.

Minimum number of pax: 10

Maximum number of pax: 45





# Jostedalsgreen National Park Centre

Learn about this dramatically beautiful landscape when you visit the Jostedalsgreen National Park Centre.

## ITINERARY

Time from departure

0	Dep. Nordfjordeid
30 min.	Arr. Nos viewpoint
45 min.	Dep. Nos
1h 15 min.	Arrive Jostedalsgreen National Park Centre
2 h 15 min.	Dep. Jostedalsgreen National Park Centre Return via Lake Hornindal
4 h	Arrive Nordfjordeid

Maximum pax: 180 per group

The tour can be operated in several shifts during the day.





# The Red Deer Farm « Hjortegarden »

Feed the deer, enjoy a meal and come for a pleasant hike in the wonderful nature together with us.

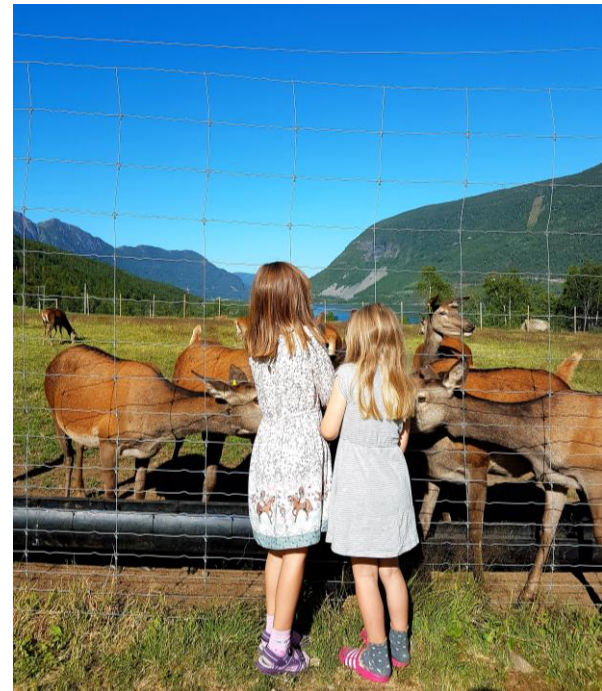
«Hjortegarden» is situated in the middle of a nature reservoir. You cannot get any closer to nature than this. Sonja and Karl Vidar are the proud owners of the farm and they welcome you to their lovely farm where nature, food traditions, hunting and love to the animal are important factors.

Welcome to the farm!

The excursion include:

Guided tour at the Red Deer Farm  
Feeding of the red deer  
Coffee/tea and homemade pastry

Duration: 3,5 hours (incl. Ferry both ways)  
Maximum pax: 45 pax





# Fjærland

**Fjord, lakes, and glaciers combined with a visit to the Norwegian Glacier Museum.**

## ITINERARY

Time from departure

0	Dep Nordfjordeid Lote – ferry Anda
2 h	Arrive Bøyabreen
2 h 15 min	Dep. Bøyabreen
2 h 30 min	Arrive Norwegian Glacier Museum
3 h 30 min	Dep. Norwegian Glacier Museum
4 h	Arrive Skei (lunch)
5 h 30 min	Dep. Skei Anda – ferry Lote
7 h	Arrive Nordfjordeid

Maximum pax: 260





# Active excursions





# Norwegian Fjord Horse Centre

Norwegian Fjord Horse Centre, established in 1989 – is the national center for the native Norwegian horse breed: The Fjord Horse, and it is no accident that it is situated at Nordfjordeid, which has been named "The Mecca of the Fjord Horse" – an area with long fjord horse traditions.

Norwegian Fjord Horse Centre is the primary resource center dedicated to this particular breed. Important tasks is promotion, information and advice on all aspects related to the Fjord Horse. The center is also dedicated to development in new areas of usage, breaking and education, as well as to further the breeding of the Fjord Horse. During your visit to the horse center, the fjord horses will be thoroughly presented to you. You will get a tour of the center, you will be presented to the stallions, the females with their foals, you will get a historic presentation of the breed and you will be invited to see a riding performance including Hungarian post riding, as well a demonstration of carriage driving. You may also be invited to join in to drive in the carriages.

## ITINERARY

Time from departure

0	Dep Nordfjordeid
10 min.	Visit Norwegian Fjord Horse Centre Light refreshments
1h 10 min.	Dep. Norwegian Fjord Horse Centre
1h 20 min.	Arr. Nordfjordeid

Maximum pax: 90 pax





# Be a Viking

Want to experience of how to be a Viking for a couple of hours? Fjordane High School is located in the heart of Nordfjordeid. They currently building a Viking settlement with a smithy and a longhouse in the middle of a farmyard. Here you will get an introduction in how the Vikings in this area worked, lived and survived (year 800-1200).

- Taste typical food made by the Viking
- Hear stories and tales of the gods Vikings used to worship
- Learn and play Viking music using drums and singing
- Join in Viking games
- Learn about blacksmithing, and try shooting an authentic longbow used by Vikings
- Learn about typical handcrafts of the Vikings.
- Take a picture with Viking clothes

## ITINERARY

Time from departure

0	Dep Nordfjordeid
15 min.	Fjordane High School – Viking settlement
2h 15 min.	Dep. Fjordane High School – Viking settlement
2h 30 min.	Arr. Nordfjordeid

Maximum pax: 40 pax Season: June 1 – August 15





# Norway's largest Viking Ship & the story of King Audbjørn

## The Saga Trail - "The Viking walk"

Join us on a walk on real Viking ground. The Nordfjord region was one of the richest and most important areas in the Viking Age. This is where the action took place, where they lived and loved, had joys and sorrows, and returned to from their many journeys.

We start our walk directly from the Port of Nordfjordeid, and walk the 1,5 km long Saga Trail, and end up at Sagastad Viking Centre to see the main attraction – the Myklebust Viking Ship – the largest ever found in Norway. The ship belonged to King Audbjørn – the King of the Fjords. Get to know him in Sagastad.

The Myklebust ship was excavated from "Rundehågen", right in the middle of Nordfjordeid. There are also other Viking burial mounds which you will pass on the Saga Trail.

**Length Saga Trail: 1,5 km.**

**Total walking distance: Approximately 2,5 km, flat terrain.**

**Total time spent (including all stops): 2,5 hrs.**





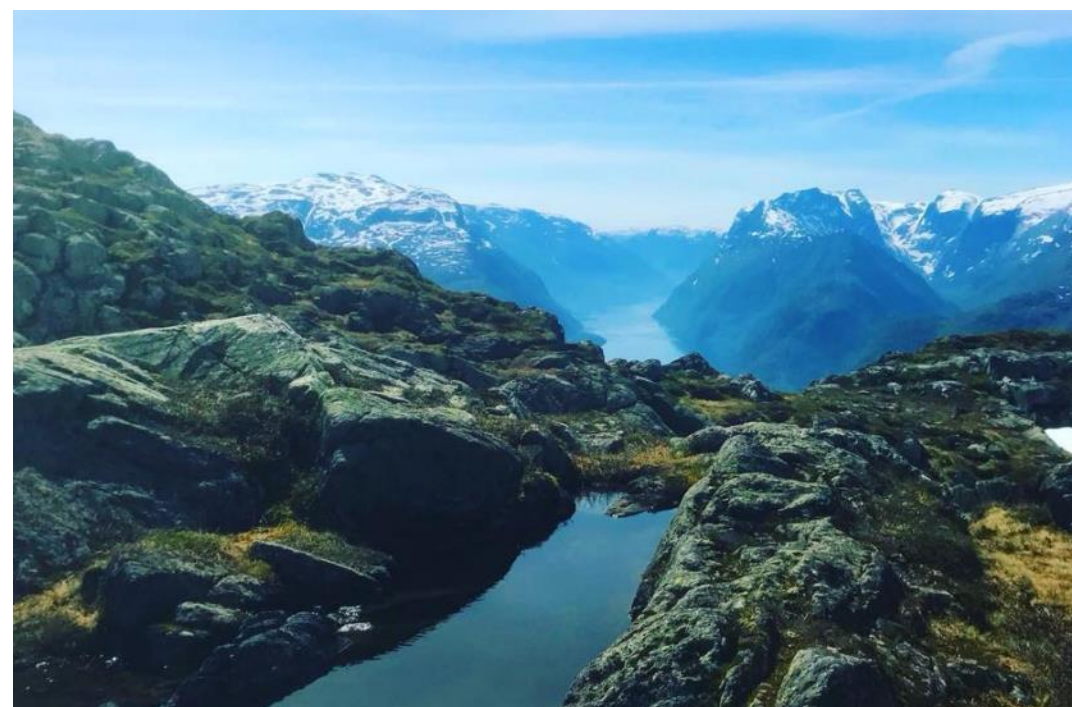
# Hike to Mt. Trollenykjen (The Troll Hike)

Join the guided hike to Mt. Trollenykjen, 898 m.a.s.l. Be rewarded by beautiful views of the Eid valley, the peak of Sagetindane, Hornindal Lake (the deepest lake in Europe), and the spectacular views of the Nordfjord from both sides of the mountain ridge. When you are hiking through the woods and climbing the rocky path you have to watch out ! You can't be sure if you are stepping on a rock or on a Troll!

Good hiking shoes. Challenging hike for experienced hikers.

Duration: 4 hours

Maximum pax: 25 pax





# Hike to Os-setra pasture (The Huldra Hike)

Join the guided tour to Os-setra pasture, 512 m.a.s.l. You climb steeply up through pine forest. At the top you find the charming summer farm by an idyllic lake. Here you can go for a dip in the lake. The authentic Viking way were to swim naked in the lake. Watch out if you see a beautiful young girl coming out of the woods. It might be Huldra!

Duration: 2,5 hours

Good hiking shoes. Uphill walk, short but challenging hike.

Maximum pax: 25 pax





# Mountain biking on perfect trails

*Why:* Because it's kind of a secret - and amazing to ride!

*What:* The experience of flow on well facilitated bike trails.

*Who:* You might think it's only for dedicated mountain bikers.

In fact - we choose trails that will fit the participants, so everyone taller than 150cm will enjoy this trip.

Duration: 4 hours (included 1 hour transport)

Minibus

The bike tour include: bikes, protection and a light snack.

Requirements: You need to be comfortable biking on narrow trails in the woods, and capable of being active for 3 hours straight.

Maximum pax: 10 pax





# Scenic walk and local food

*Why:* Because you've never seen a forest like this.

*What:* A short feelgood hike in a beautiful forest.

Multiple viewpoints, sherpa-built trails, and a beautiful 70m waterfall. Eat local food prepared outside.

*Who:* Everyone - as long as you can walk a flight of stairs.

Duration: 4 hours (included 1 hour transport)

Minibus

Try samples of local food from farms in the area.

Requirements: You need to be able to walk up a flight of stairs or two, and remember we're staying outdoors for 3 hours.

Minimum pax: 10 pax

Maximum pax: 80 pax





# Local tour agents

## Geiranger & Nordfjord Cruise Handling

### **Coach services - shore excursions.**

Offering Excursions in both Port of Olden – Nordfjord and Geirangerfjord Cruise Port. A wide range of modern, comfortable coaches.

### **Guide Services**

Offering English, German, French, Spanish and Catalan, Italian, Dutch, Russian, Norwegian and Scandinavian languages. Staff of 130 skillful, experienced, and service minded local guides available. Guides are specialized in the area around our two fjords, and take pride in giving interesting and entertaining information to our guests. They cover all kinds of tours; from traditional coach excursions, to tours of special interests (i.e. agriculture, geology, design, industry), and activity tours (i.e. hiking, skiing). Our belief is that a good guide is the best guarantee for a successful tour.

### **Ship agency**

Professional services and local knowledge.

Perhusvn. 24, NO-6783 Stryn

Tel. +47 57 87 74 73

[geiranger-nordfjord.no](http://geiranger-nordfjord.no)    [post@geiranger-nordfjord.no](mailto:post@geiranger-nordfjord.no)

## Firda Billag Buss

Modern coach fleet available for summer visitors. Coach capacity: 37 to 47 seats. The drivers have years of experience in the tourism industry and are comfortable driving on the precipitous mountain roads of western Norway.

Hegrevege 8, NO-6783 Stryn, Tel: · +47 57 72 50 00

[post@firda-billag.no](mailto:post@firda-billag.no)    [firda-billag.no](http://firda-billag.no)

Opening hours office: 8 AM until 4 PM

Direction manager: Andre Monsen – [andre@firda-billag.no](mailto:andre@firda-billag.no)

Coach Service Manager: Tel. +47 57 72 57 87 (8 am–4 pm).

### **Guide services: Port Service Geiranger – Nordfjord**

Guide service from beginning of May until September with guides that are trained to guide in all the tours we offer in Nordfjord and Geiranger area. Languages offered: English, German, French, Spanish and Scandinavian languages

Tel.: + 47 455 05 532 / + 47 702 63 007

[cruise@geirangerfjord.no](mailto:cruise@geirangerfjord.no)    [geirangerfjord.no](http://geirangerfjord.no)

Opening hours office: 8 AM until 4 PM







# imageshop.no.no/nordfjord



**Free photoservice**  
**Activities, attractions and landscape**  
**Excellent picture quality**  
**Over 200 pictures**  
**New pictures regularly**





## Visit Nordfjord

Perhusvegen 24

NO-6783 STRYN

+47 57 87 40 40

[mail@nordfjord.no](mailto:mail@nordfjord.no)

[imageshop.no/nordfjord](https://imageshop.no/nordfjord)

[nordfjord.no/cruise](https://nordfjord.no/cruise)



N  
J  
F  
ORD

