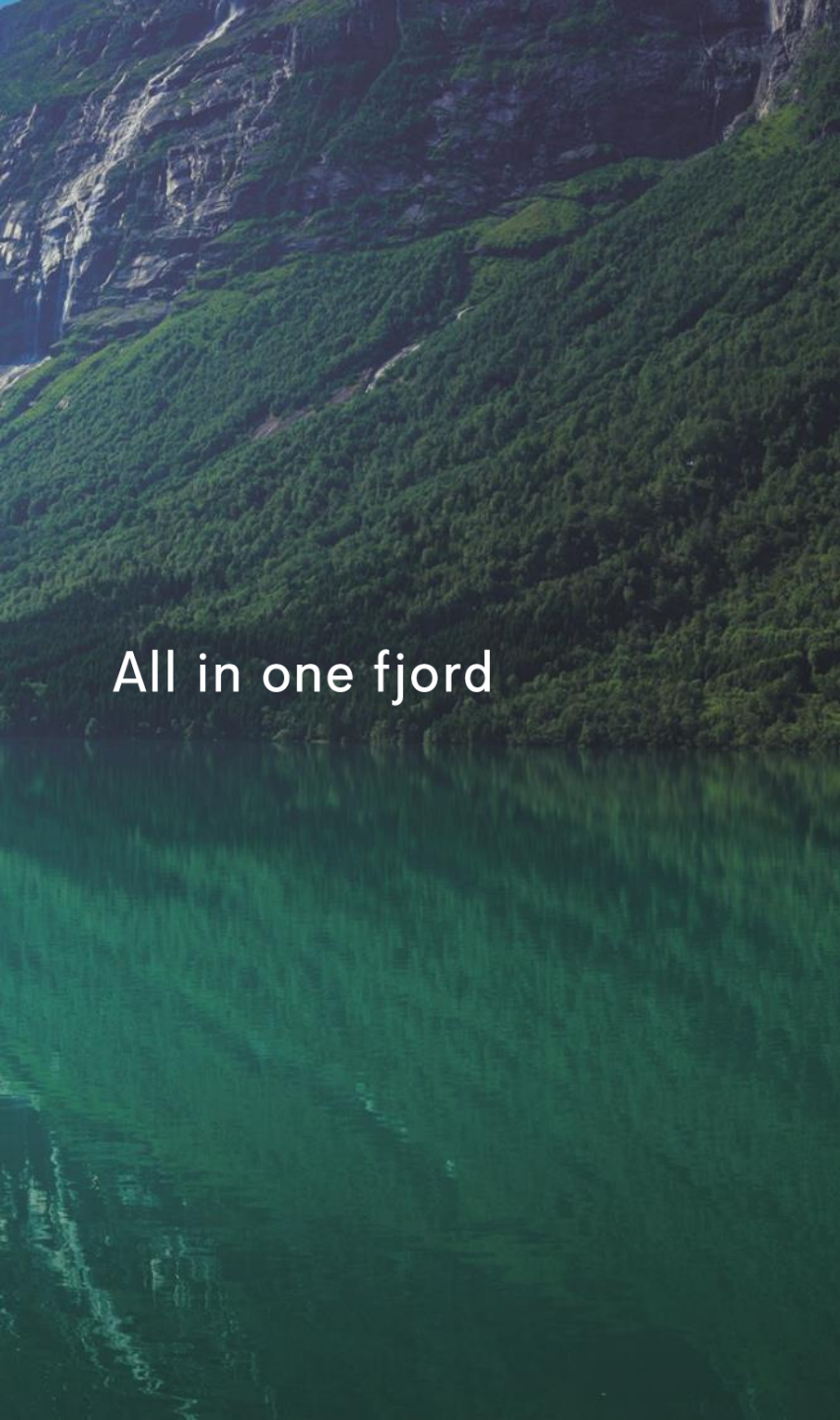




F  
J  
N  
O  
R  
D



All in one fjord



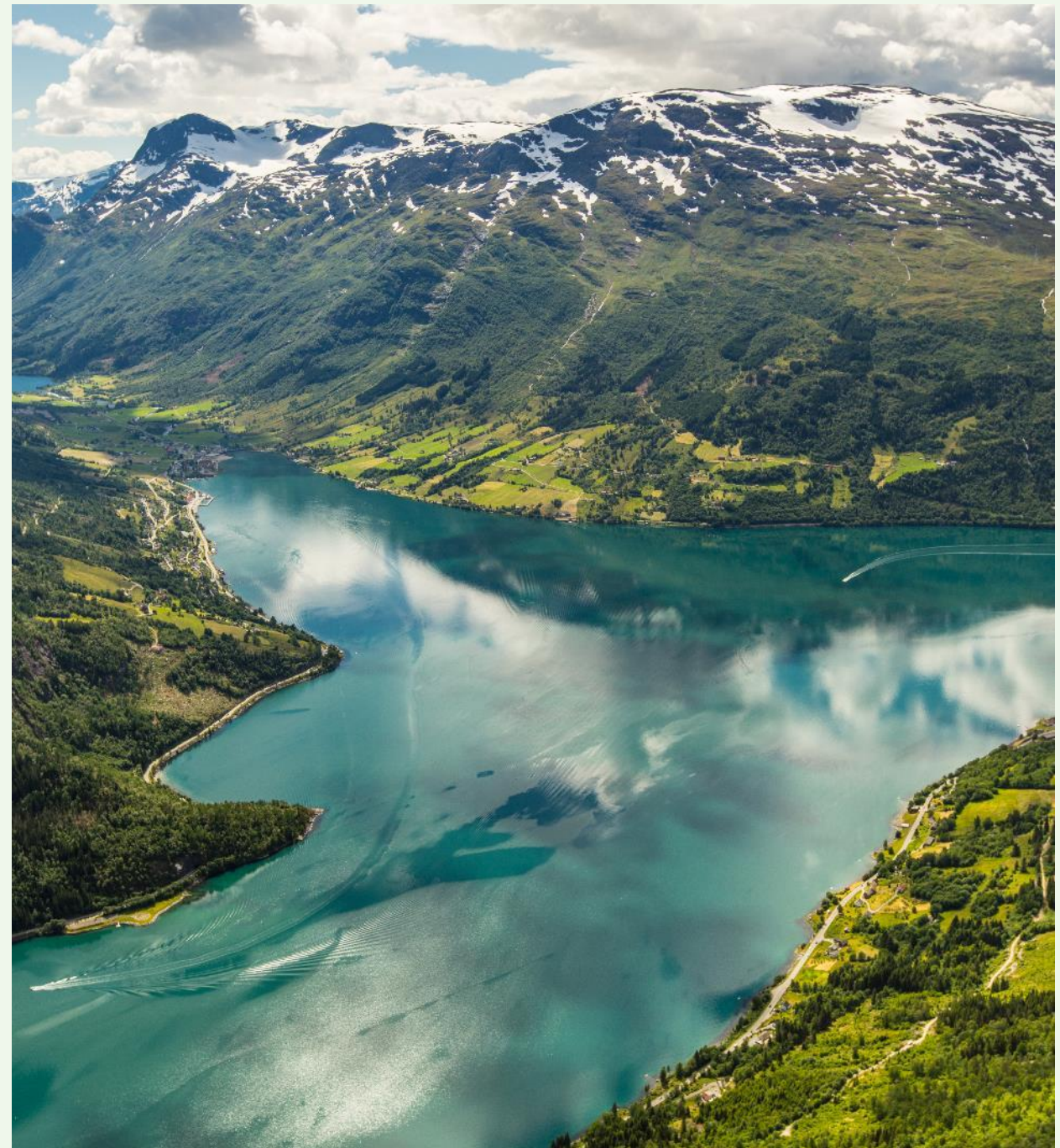
# **Port of Nordfjordeid – The Viking destination**

**Cruise Manual 2018**



# Content

1. Welcome to Nordfjordeid
2. Map of Nordfjord
3. Contact information
4. Port information
5. Excursions (scenic, cultural and active)
6. Local tour agents
7. Map of Nordfjordeid





# Port of Nordfjordeid



Nordfjord is situated between the biggest glacier in mainland Europe and Norway's wildest stretch of coast at Stad. This 150-km-long area from west to east, from ocean to glacier, offers lots of great and readily accessible scenic, cultural and culinary experiences. Everything you're looking for in one fjord.

We wish you a warm welcome to the Nordfjord. Nordfjord consists of the following ports: Måløy, Selje, Nordfjordeid, Sandane, Loen and Olden.

We hope this information will be useful when calling in at Nordfjordeid, or one of our other ports.

The seawalk Port of Nordfjordeid is new in 2018. Nordfjordeid is in the heart of Nordfjord. From the seawalk quay you find a complete small modern Norwegian town with post, bank, doctor, hospital, dentist, shopping, operahouse, Norway's largest vikingship, the Fjord Horse, art exhibition, church-consert, golfing, salmonspotting and hiking.

[nordfjord.no/cruise](http://nordfjord.no/cruise)







1 West Cape



2 Hoddevik & surf



3 Selja Monastery



4 The Myklebust Viking Ship & Sagastad



5 The Fjord horse



6 Nordfjord Folk Museum



7 Lake Hornindalsvatnet



8 Loen Skylift & Via Ferrata Loen



9 Mt. Skåla 1848 m



10 Lodalen Valley

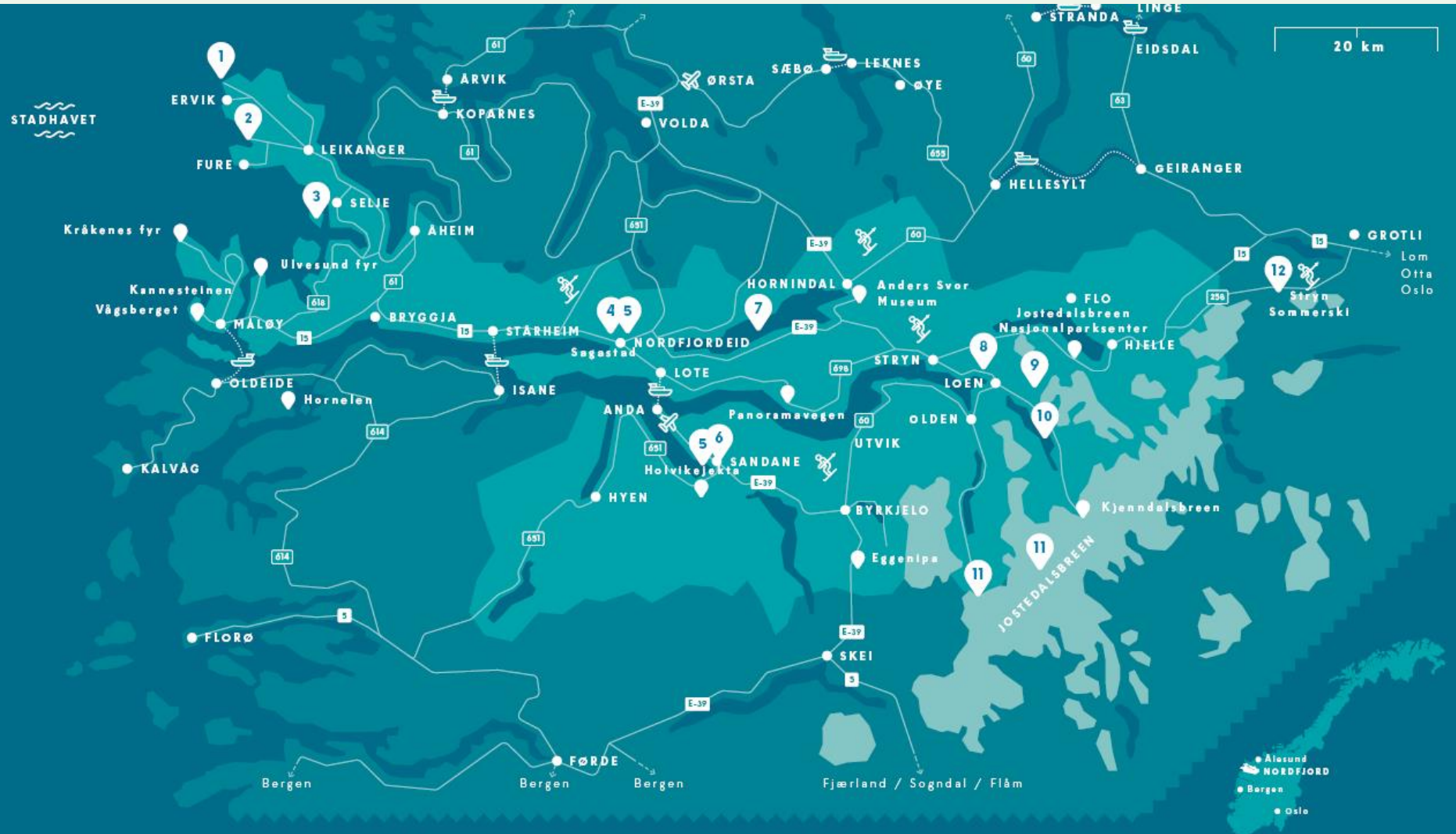


11 Briksdal Glacier & Jostedalbreen National Park



12 The old Strynefjell Mountain Road

STADHAVET



# Contact Information

Port of Nordfjordeid, tel. +47 917 95 300

Port Agent Nordfjordeid/Nordfjord Service Terminal,  
tel. +47 917 95 300

Harbor Master/Seawalk Nordfjordeid tel. +47 917 95 300

Firda Billag Buss AS, tel. +47 57 72 50 00

Geiranger & Nordfjord Cruise Handling, tel. +47 57 87 74 73

Visit Nordfjord, tel. +47 57 87 40 40

Eid Tourist Information, tel. +47 57 86 46 00

[www.portofnordfjordeid.no](http://www.portofnordfjordeid.no)

[eid@nordfjordcruises.no](mailto:eid@nordfjordcruises.no)

[eid@nordfjordcruises.no](mailto:eid@nordfjordcruises.no)

[firda-billag.no](http://firda-billag.no)

[geiranger-nordfjord.no](http://geiranger-nordfjord.no)

[nordfjord.no](http://nordfjord.no)

[nordfjord.no](http://nordfjord.no)

**Fire 110**

**Police 112**

**Ambulance 113**

**Doctor Nordfjordeid +47 57 86 30 20**

**Medical Emergencies +47 57 87 69 90 or 113**

**Nordfjord Hospital +47 57 86 40 00**

**Pharmacy Nordfjordeid +47 57 86 66 00**

**Police Eid +47 57 86 34 80 / 02800**

**Security: Report ISPS security incident:  
+47 917 95 300/+47 355 72 625**

# Port Authority/ Port of Nordfjordeid

## Port Authority/Bremanger Havn

Tel. +47 994 39 290

E-mail: [monica.sande@bremanger.kommune.no](mailto:monica.sande@bremanger.kommune.no)

**Security:** ISPS – Code implemented for Port and Port facility. Nordfjordeid Cruisehavn/NONFD-0001

**Local time:** UTC +1, summer time UTC +2.

**Local Pilot Station:** Kvitsøy Pilot station +47 517 35 397

## ISPS requirements

Pre-arrival information: Available in Safe Sea Net. Please send by e-mail to: [eid@nordfjordcruises.no](mailto:eid@nordfjordcruises.no) if not in SSN;

## ISPS documents:

1. Ship Pre Arrival information
2. Pax list
3. Crew list
4. Embarking/Disembarking manifest
5. Visitor list
6. Cargo manifest (loading/unloading)

## Berths: The SeaWalk

The SeaWalk is approx. 220 m long and 4,2- m wide steel, ADA compliant construction, floating on 8 wave damping pontoons with a capacity of more than 4000 passengers per hour and can carry a passenger load of more than 300 tons. SeaWalk consists of 3 bridges, two link pontoons and the hinged landing section. The bridges are 72 meters long. The walkway is approx. 210 cm above sea level and the railings are 110 cm high.

**Tugs:** Not compulsory.

**Harbour Pilot:** Not compulsory.

**Mooring boat:** Available.



# « Cruise Day » Nordfjordeid



When the cruise ship arrive in Nordfjordeid, this charming town will welcome you with all it's heart for you to enjoy your Cruise Day here. An early afternoon festival with good shopping deals, art exhibition, concerts, salmon spotting, golfing, hiking and a church concert will be available.

In Nordfjordeid you will find 50 shops and 10 restaurants. Perhaps the most special souvenir to bring home from your cruise is to be found here?

The Church in Eid dates back to 1849, and is well known for its good acoustics and spectacular carvings and rose painting. On Cruise days, visitors are invited to attend a church concert at 4pm performed by local musicians.



# Scenic excursions





# Briksdal Glacier

The magnificent Briksdal Glacier forms part of the Jostedal Glacier National Park, and plunges 1200 metres to the lush, narrow Briksdal valley below – a sight that attracts 300,000 visitors from all over the world each year.

## ITINERARY

Timing from departure

0	Dep. Nordfjardeid
30 min.	Arr. Nos viewpoint
45 min.	Dep. Nos
1 h 45 min.	Olden Lake (photo stop)
2 h	Briksdal Easy walk to the glacier (3 km, 30-45 min. each way) Coffee/tea, cakes and souvenir shopping.
4 h 30 min.	Dep. Briksdal Return via Lake Hornindal
6 h 15 min.	Arr. Nordfjardeid

Maximum pax: 650





# Troll car to Briksdal Glacier

The magnificent Briksdal Glacier forms part of the Jostedal Glacier National Park, and plunges 1200 metres to the lush, narrow Briksdal valley below – a sight that attracts 300,000 visitors from all over the world each year.

## ITINERARY

Time from departure

0	Dep. Nordfjordeid
30 min.	Arr. Nos viewpoint
45 min.	Dep. Nos
1 h 45 min.	Olden Lake (photo stop)
2 h	Arr. Briksdal
2 h	Dep. Troll Car
2 h 15 min	Arr. Briksdal Glacier
	Easy walk to the glacier, approx. 800 metres on gravel footpath.
3 h	Dep. with Troll car
3 h 15 min	Arr. Briksdal
	Restaurant. Coffee/tea, cakes and souvenir shopping.
4 h	Dep. Briksdal
	Return via Lake Hornindal
5 h 45 min.	Arr. Nordfjordeid

Maximum pax: 84 in each group.





# Cruise Olden Lake

Enjoy a relaxing boat trip on the turquoise waters of Olden Lake aboard the M/B Olden.

## ITINERARY

Time from departure

0	Dep. Nordfjordeid
30 min.	Arr. Nos viewpoint
45 min.	Dep. Nos
1 h 45 min.	Arr. Pier Eide - boat
2 h 45 min.	Arr. Pier Rustøen – bus Return via Lake Hornindal
4 h 15 min.	Arr. Nordfjordeid

Maximum number of pax: 90

One half of the group travels by bus to Rustøen. The other half travels by boat. At Rustøen they swap their mode of transport. The tour can be combined with a tour to Briksdal Glacier.





# Idyllic Yrineset

Yrineset, popularly known as the Rivendell gem of Lake Olden. Treat body and soul to a few hours of peace and tranquillity at this idyllic spot; maybe even catch your own meal from the lake.

## ITINERARY

Time from departure

0	Dep. Nordfjordeid
30 min.	Arr. Nos viewpoint
45 min.	Dep. Nos
2 h	Arr. Yrineset Fishing activities Fish barbecue
4 h 30 min.	Dep. Yrineset Via Lake Hornindal
6 h.	Arr. Nordfjordeid

Maximum number of pax: 90

Can also be combined with boat on lake Olden.





# Combination of excursions in Olden Valley

Troll car to Brikedal Glacier



Aabrekk Farm



Stone Age Cave



Yrineset





# NEW 2017: Loen Skylift

Loen Skylift - a spectacular new attraction and adventure arena. Loen Skylift will lift you from the fjord to 1011 m. Enjoy the spectacular views of the fjord landscape from the restaurant table, or while hiking in the mountains.

## ITINERARY

Timing from departure

0	Dep. Nordfjordeid
30 min.	Arr. Nos viewpoint
45 min.	Dep. Nos
1 h 45 min.	Arr. Loen
2 h	Loen Skylift
3 h	Dep. Loen
	Return via Lake Hornindal
4 h	Arr. Nordfjordeid

This excursion can be done in several shifts.  
Possibilities to add different hikes at Mt. Hoven, and lunch or refreshments at Hoven Restaurant.





# Lodal Valley & Kjenndal Glacier

A boat trip on the emerald green waters of Loen Lake is a fine introduction to this valley's awe-inspiring scenery and dramatic history.

## ITINERARY

Time from departure

0	Dep. Nordfjordeid
30 min.	Arr. Nos viewpoint
45 min.	Dep. Nos
1 h 45 min.	Dep. MS Kjenndal II
2 h 45 min.	Coffee/tea at Kjenndalstova
3h 30 min.	Dep. Kjenndalstova
3h 45 min.	Arr. Kjenndal Glacier
4h	Dep. Kjenndal Glacier
	Stop at the memorial ground
	Return via Lake Hornindal
6h 15 min.	Arrive Nordfjordeid

Maximum pax: 90





# Combination tours from Loen

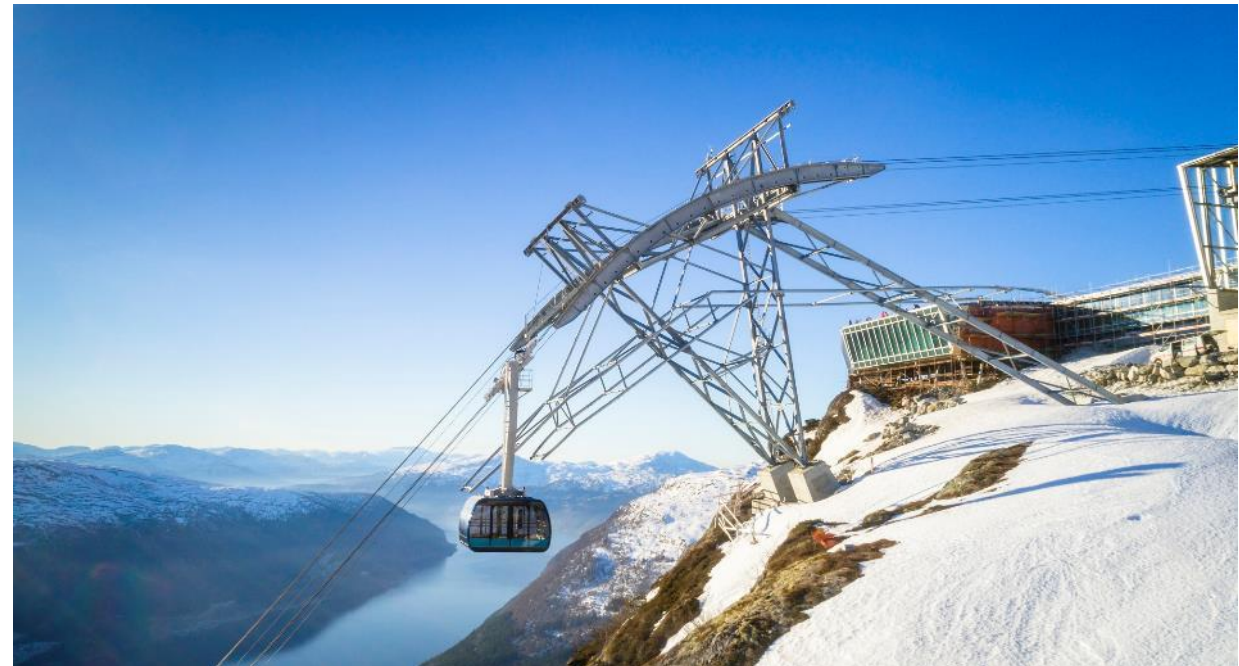
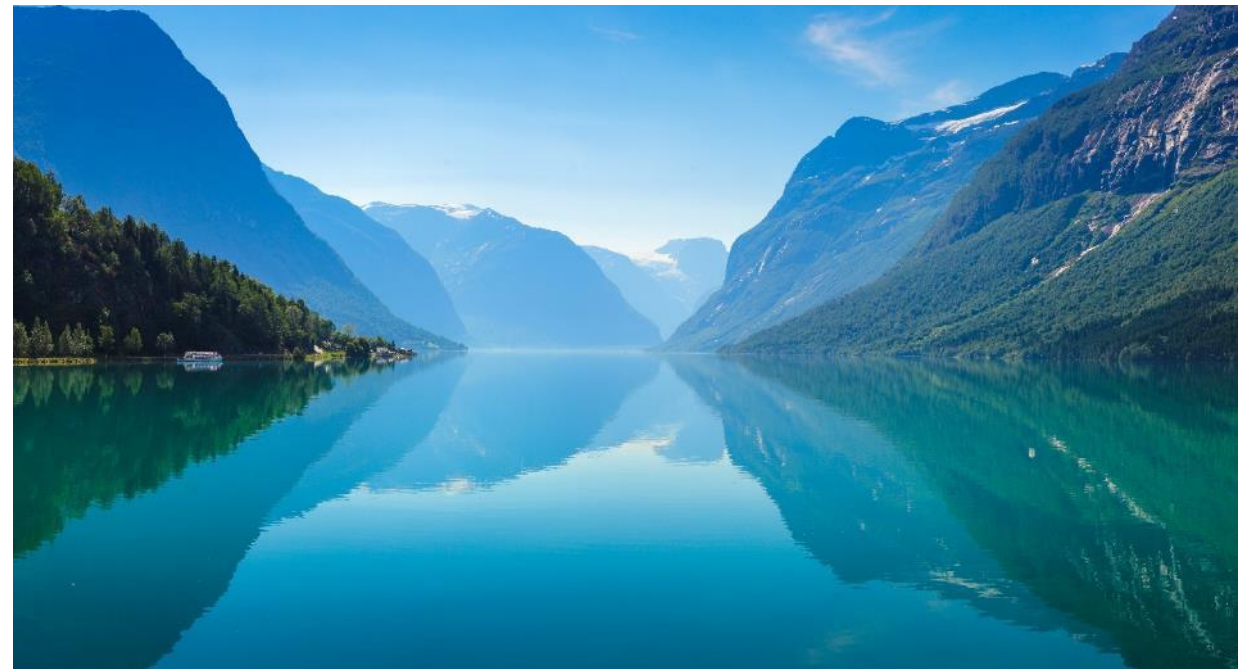
## Kjenndal Glacier & Loen Skylift

Trip to Lodalen Valley and the Kjenndal Glacier in combination with Loen Skylift to Mt. Hoven 1011 m.a.s.l.

### ITINERARY

Time from departure

0	Dep. Nordfjordeid
30 min.	Arr. Nos viewpoint
45 min.	Dep. Nos
1 h 45 min.	Dep. MS Kjenndal II
3h	Arr. Kjenndal Glacier
3h 30 min.	Dep. Kjenndal Glacier
	Stop at the memorial ground
4h	Arr. Loen
	Loen Skylift
	Refreshments at Hoven Restaurant
5h 15 min.	Dep. Loen
	Return via Lake Hornindal
6h 30 min.	Arrive Nordfjordeid



# Nordfjord Panorama

This excursion rewards you with superb views of the Nordfjord, the fifth longest fjord in Norway and Hornindal Lake, the deepest lake in Northern Europe.

## ITINERARY

Time from departure

0	Dep. Nordfjordeid
30 min.	Arr. Kvalen
45 min.	Dep. Kvalen
1h	Arr. Nos viewpoint
1h 15 min.	Dep. Nos
2 h	Arr. Stryn stop for refreshments/shopping
3 h	Dep. Stryn
	Return via Hornindal Lake
4 h 30 min.	Arr. Nordfjordeid

This tour can be done in several shifts.





# Geiranger

From one wonderful fjord to another, experience the beauty and splendour of a part of Norway you do not want to miss.

## ITINERARY

Time from departure

0	Dep. Nordfjordeid
2 h	Arr. Geiranger Skywalk, Mt. Dalsnibba
2 h 15 min.	Dep. Geiranger Skywalk, Mt. Dalsnibba
3 h 15 min.	Arr. Geiranger (lunch)
5 h	Dep. Geiranger - ferry
6 h	Arr. Hellesylt
	Return via Lake Hornindal
7 h 15 min.	Arr. Nordfjordeid

Maximum number of pax: 180

Double capacity if the tour is operated in two groups (vice versa).





# Fishing village of Kalvåg

Enjoy a day tour along the banks of Nordfjord to the charming fishing village of Kalvåg, with good atmosphere, good sea food and coastal culture.

## ITINERARY

Time from departure

0h	Dep. Nordfjordeid
1h	Ferry Måløy – Oldeide
2h 15 min	Arr. Kalvåg Lunch
4h 30 min.	Dep. Kalvåg
6h	Ferry Isane-Stårheim
6h 30 min.	Arr. Nordfjordeid

Maximum number of pax: 120

Double capacity if the tour is operated in two groups (vice versa).





# Round trip to the coast of Nordfjord



**Kråkenes lighthouse**



**Vågsberget**



**Kannesteinen Rock**



**Refvik Beach**

## ITINERARY

Time from departure

0	Dep. Nordfjordeid Via Refvik Beach
1 h 30 min.	Arr. Kråkenes Lighthouse
1 h 45 min.	Dep. Kråkenes Lighthouse
2 h 45 min.	Arr. Kannesteinen
3 h	Dep. Kannesteinen
3 h 15 min.	Arr. Vågsberget
3 h 45 min.	Dep. Vågsberget
4 h 45 min.	Arr. Nordfjordeid



# Cultural excursions





# Sagastad and the Myklebust Viking Ship

Norway's largest Viking Ship, that has ever been found, is being reconstructed, based on the findings in the burial mound. The ship will be exhibited in Sagastad Visitor Centre, in Nordfjordeid, where the ship was found. Digital and physical exhibitions about the Vikings, the findings and boat building traditions. Changing exhibitions.

Located only 700 meters from Port of Nordfjordeid – a nice stroll along the fjord.

## ITINERARY

Time from departure

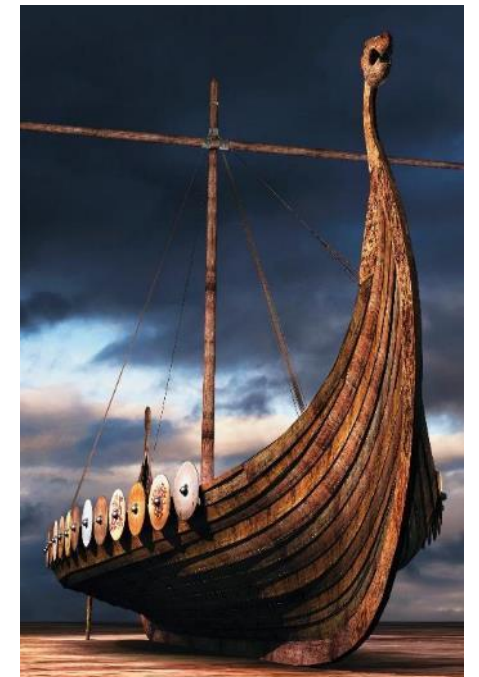
0	Dep. Nordfjordeid
10 min.	Arr. Sagastad Visitor Centre

A visit to the centre takes from 30 minutes to 1,5 hours, depending on your interest and how deep you want to dive into the Viking History.

**Time spent:** 1 hr – 2,5 hrs including the walk.

**Distance from port:** 700 meters.

Souvenir Shop and Cafe at Sagastad





# From the Viking Age to Modern Times

## 1000 years of Nordfjord history in one day

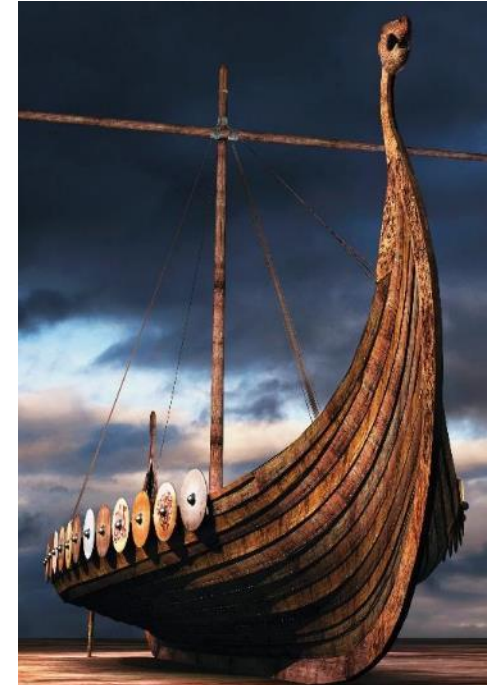
A magic round trip with a good dose of scenery, culture, and history. Experience Norway's largest Viking Ship, exceptional Norwegian fjord scenery, snow capped mountains and Nordfjord Folk Museum. And enjoy local gourmet lunch at Gloppen Hotel.

### ITINERARY

Time from departure

0	Dep. Port of Nordfjordeid
10 min.	Arr. Sagastad Visit Sagastad & the Myklebust Viking Ship
1h	Dep. Sagastad
1h 15 min.	Ferry Lote-Anda
1h 45 min.	Arr. Sandane and Nordfjord Folk Museum
2h 30 min.	Lunch with local food at Gloppen Hotel
3h 45 min.	Dep. Sandane
5h 15 min.	Arr. Stryn
5h 30 min.	Dep. Stryn
6h 15 min.	Arr. Nos. Photo stop.
6h 30 min.	Dep. Nos
7h	Arr. Port of Nordfjordeid

Capacity: 90 pax.





# Culture & Cuisine of Nordfjord

A magic round trip with a liberal dose of scenery, culture, and traditional, local fare.

## ITINERARY

Time from departure

0	Dep. Nordfjordeid Arr. Lote – ferry Anda
30 min.	Visit at Vereide Church
1h 15 min.	Arr. Sandane Visit Nordfjord Folk Museum
2h 15 min.	Dep. Museum
2h 30 min.	Lunch with local food at Gloppen Hotel
4h	Dep. Gloppen Hotel
4h	Visit Holvikejekta (ancient sea vessel)
5h	Dep. Anda – ferry Lote
5h 30 min.	Arr. Nordfjordeid

Capacity: 90 pax.





# Viking & Culture

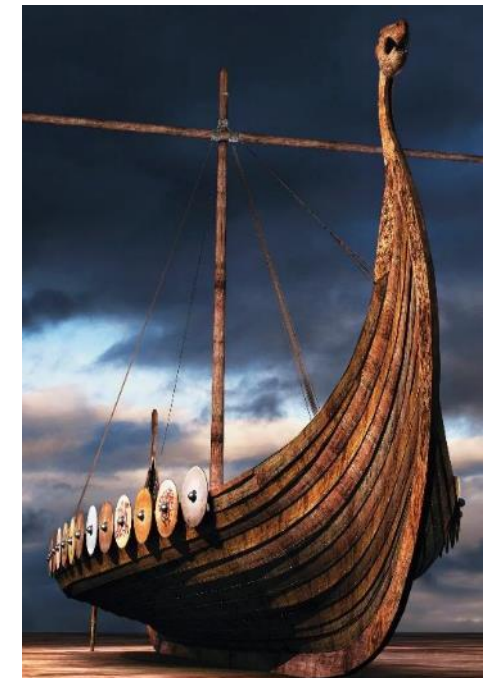
1000 years of Nordfjord history in one day

A magic round trip with a liberal dose of scenery, culture, and traditional, local fare.

## ITINERARY

Time from departure

0	Dep. Nordfjordeid
	Visit Sagastad & the Myklebust Viking Ship
1h 15 min.	Lote – ferry Anda
1h 45 min.	Arr. Sandane
	Visit Nordfjord Folk Museum
2h 45 min.	Dep. Museum
2h 45 min.	Lunch Gloppen Hotel
4h	Dep. Gloppen Hotel
4h 15 min.	Dep. Anda – ferry Lote
4h 45 min.	Arr. Nordfjordeid





# Home visit to Skårhaug

Visit one of the oldest privately owned houses in Eid. The house was built in 1840 and was both the sheriff's home and his office. Since 1870, Skårhaug has been owned by the same family. Recently, the house was renovated, and the rooms have been furnished in several different period styles.

When you visit Skårhaug, a guided tour is available. You will be able to touch old tools and other objects and learn about the local baking traditions. Perhaps you would like to make some «svele» or «potetkake» yourself? Coffee in porcelain cups is offered, and you can relax in the garden or in the beautiful living rooms.

We walk from the port through the cobblestoned Eidsgata with traditional wooden houses via the Viking burial mound and a short visit to the Eid church. This is an on-foot tour.

## ITINERARY

Time from departure

0	Dep. Port of Nordfjordeid Guided walk to the Viking burial mound (on the Saga Trail) Visit Eid Church
1h 15 min.	Home visit to Skårhaug for tour and coffee/local pastries.
2h 30 min.	Dep. Skårhaug
3h	Arr. Port of Nordfjordeid

Capacity: 20 pax





# Museums and visitor centres

- Sagastad and the Myklebust Viking Ship
- Nordfjord Folk Museum
- Anders Svor Museum
- Singerheimen
- Jostedalbreen National Park Centre
- Vågsberget Trading Station and Inn
- The Måløy Raid centre
- Selja Monastery





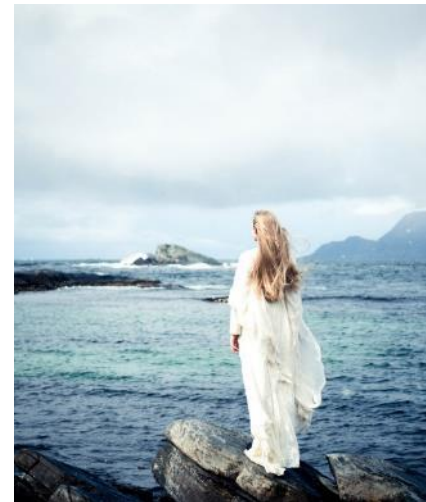
# Selja Monastery

We drive through a contrasting landscape of mountain and ocean to the picturesque village Selje. From here, there is a 15 minutes boat ride to Selja Island, hosting the ruins of Selja Monastery, built by the Benedictine monks in the early 12<sup>th</sup> century in memory of Sta. Sunniva. The Legend says that the Irish king's daughter Sunniva died as a martyr here, and became the saint of Western Norway.

## ITINERARY

Time from departure

0	Dep. Nordfjordeid
1 h	Arr. Selje
1 h 15 min.	Arr Selja Monastery at Selja Island
2 h 15 min.	Dep. Selja
2 h 30 min.	Arr. Selje
	Stop for coffee and a stroll in the village
3 h	Dep. Selje Via Åheim and Bryggja
4 h 30 min.	Arr. Nordfjordeid





# West Cape

Half-day tour to the famous West Cape. From Nordfjordeid we drive west to the historic coastal village of Selje, enjoying typical coastal scenery on the way. During the short break in Selje we can have a walk on the sandy Selje Beach. Over the Stad peninsula, famous in Norway for extremely rough storms we reach West Cape, towering some 500 metres above the Atlantic.



## ITINERARY

Time from departure

0	Dep. Nordfjordeid
1 h	Arr. Selje
1 h 30 min.	Dep. Selje
2 h 15 min.	Arr. Vestkapp
3 h	Dep. Vestkapp via Bryggja
4 h 30 min.	Arr. Nordfjordeid





# Jostedalbreen National Park Centre

Learn about this dramatically beautiful landscape when you visit the Jostedalbreen National Park Centre.

## ITINERARY

Time from departure

0	Dep. Nordfjordeid
30 min.	Arr. Nos viewpoint
45 min.	Dep. Nos
1h 15 min.	Arrive Jostedalbreen National Park Centre
2 h 15 min.	Dep. Jostedalbreen National Park Centre Return via Lake Hornindal
4 h	Arrive Nordfjordeid

Maximum pax: 180 per group

The tour can be operated in several shifts during the day.





# Fjærland

Fjord, lakes, and glaciers combined with a visit to the Norwegian Glacier Museum.

## ITINERARY

Time from departure

0	Dep Nordfjordeid Lote – ferry Anda
2 h	Arrive Bøyabreen
2 h 15 min	Dep. Bøyabreen
2 h 30 min	Arrive Norwegian Glacier Museum
3 h 30 min	Dep. Norwegian Glacier Museum
4 h	Arrive Skei (lunch)
5 h 30 min	Dep. Skei Anda – ferry Lote
7 h	Arrive Nordfjordeid

Maximum pax: 260





# Active excursions





# Norwegian Fjord Horse Centre

Norwegian Fjord Horse Centre, established in 1989 – is the national center for the native Norwegian horse breed: The Fjord Horse, and it is no accident that it is situated at Nordfjordeid, which has been named "The Mecca of the Fjord Horse" – an area with long fjord horse traditions.

Norwegian Fjord Horse Centre is the primary resource center dedicated to this particular breed. Important tasks is promotion, information and advice on all aspects related to the Fjord Horse. The center is also dedicated to development in new areas of usage, breaking and education, as well as to further the breeding of the Fjord Horse. During your visit to the horse center, the fjord horses will be thoroughly presented to you. You will get a tour of the center, you will be presented to the stallions, the females with their foals, you will get a historic presentation of the breed and you will be invited to see a riding performance including Hungarian post riding, as well a demonstration of carriage driving. You may also be invited to join in to drive in the carriages.

## ITINERARY

Time from departure

0	Dep Nordfjordeid
10 min.	Visit Norwegian Fjord Horse Centre Light refreshments
1h 10 min.	Dep. Norwegian Fjord Horse Centre
1h 20 min.	Arr. Nordfjordeid

Capacity: 90 pax





# Norway's largest Viking Ship & the story of King Audbjørn

## The Saga Trail

Join us on a walk on real Viking ground. The Nordfjord region was one of the richest and most important areas in the Viking Age. This is where the action took place, where they lived and loved, had joys and sorrows, and returned to from their many journeys.

We start our walk directly from the Port of Nordfjordeid, and walk the 1,5 km long Saga Trail, and end up at Sagastad Viking Centre to see the main attraction – the Myklebust Viking Ship – the largest ever found in Norway. The ship belonged to King Audbjørn – the King of the Fjords. Get to know him in Sagastad.

The Myklebust ship was excavated from “Rundehågjen”, right in the middle of Nordfjordeid. There are also other Viking burial mounds which you will pass on the Saga Trail.

**Length Saga Trail: 1,5 km.**

**Total walking distance: Approximately 2,5 km, flat terrain.**

**Total time spent (including all stops): 2,5 hrs.**





# Local tour agents

## Geiranger & Nordfjord Cruise Handling

### Coach services - shore excursions.

Offering Excursions in both Port of Olden – Nordfjord and Geirangerfjord Cruise Port. A wide range of modern, comfortable coaches.

### Guide Services

Offering English, German, French, Spanish and Catalan, Italian, Dutch, Russian, Norwegian and Scandinavian languages. Staff of 130 skillful, experienced, and service minded local guides available. Guides are specialized in the area around our two fjords, and take pride in giving interesting and entertaining information to our guests. They cover all kinds of tours; from traditional coach excursions, to tours of special interests (i.e. agriculture, geology, design, industry), and activity tours (i.e. hiking, skiing). Our belief is that a good guide is the best guarantee for a successful tour.

### Ship agency

Professional services and local knowledge.

Perhusvn. 24, NO-6783 Stryn  
Tel. +47 57 87 74 73

[geiranger-nordfjord.no](http://geiranger-nordfjord.no)    [post@geiranger-nordfjord.no](mailto:post@geiranger-nordfjord.no)

## Firda Billag Buss

Modern coach fleet available for summer visitors. Coach capacity: 37 to 47 seats. The drivers have years of experience in the tourism industry and are comfortable driving on the precipitous mountain roads of western Norway.

Hegrevegen 8, NO-6783 Stryn, Tel: · +47 57 72 50 00

[post@firda-billag.no](mailto:post@firda-billag.no)    [firda-billag.no](http://firda-billag.no)

Opening hours office: 8 AM until 4 PM

Direction manager: Andre Monsen – [andre@firda-billag.no](mailto:andre@firda-billag.no)

Coach Service Manager: Tel. +47 57 72 57 87 (8 am–4 pm).

### Guide services: Port Service Geiranger – Nordfjord

Guide service from beginning of May until September with guides that are trained to guide in all the tours we offer in Nordfjord and Geiranger area. Languages offered: English, German, French, Spanish and Scandinavian languages

Tel.: + 47 455 05 532 / + 47 702 63 007

[cruise@geirangerfjord.no](mailto:cruise@geirangerfjord.no)    [geirangerfjord.no](http://geirangerfjord.no)

Opening hours office: 8 AM until 4 PM





N  
J  
O  
R  
D  
F



# imageshop.no/nordfjord



**Free photoservice**  
**Activities, attractions and landscape**  
**Excellent picture quality**  
**Over 200 pictures**  
**New pictures regularly**





N  
J  
F  
ORD

## Visit Nordfjord

Perhusvegen 24  
NO-6783 STRYN  
+47 57 87 40 40

[mail@nordfjord.no](mailto:mail@nordfjord.no)  
[imageshop.no/nordfjord](https://imageshop.no/nordfjord)  
[nordfjord.no/cruise](https://nordfjord.no/cruise)

